



St Michaels Court, Worthing, West Sussex, BN11 4SA
Asking Price Of £275,000



We are pleased to be able to offer a first floor, purpose built apartment. The property offers private entrance, two bedrooms, kitchen, bathroom and separate WC. The flat also benefits from a rear garden.



Key Features

- First Floor Apartment
- Two Bedrooms
- Private Rear Garden
- Garage in Compound
- Lounge
- Private Entrance
- Fitted Kitchen
- Bathroom & WC
- Chain Free



2 Bedrooms



1 Bathrooms



1 Reception Room

INTERNAL

Private entrance with stairs rising to the first floor landing with access to all rooms. There is a lounge with a fire surround, fitted kitchen with spaces for appliances, sink and drainer. There are two double bedrooms, both bedrooms benefitting from built in wardrobes and an additional storage cupboard in the second bedroom. The bathroom comprises of bath with shower above and wash hand basin. The WC is located just next door to the bathroom and has a hand basin.

EXTERNAL

There is a private rear garden laid to paving accessed via a timber gate. Outside storage cupboard and a garage located in a compound.

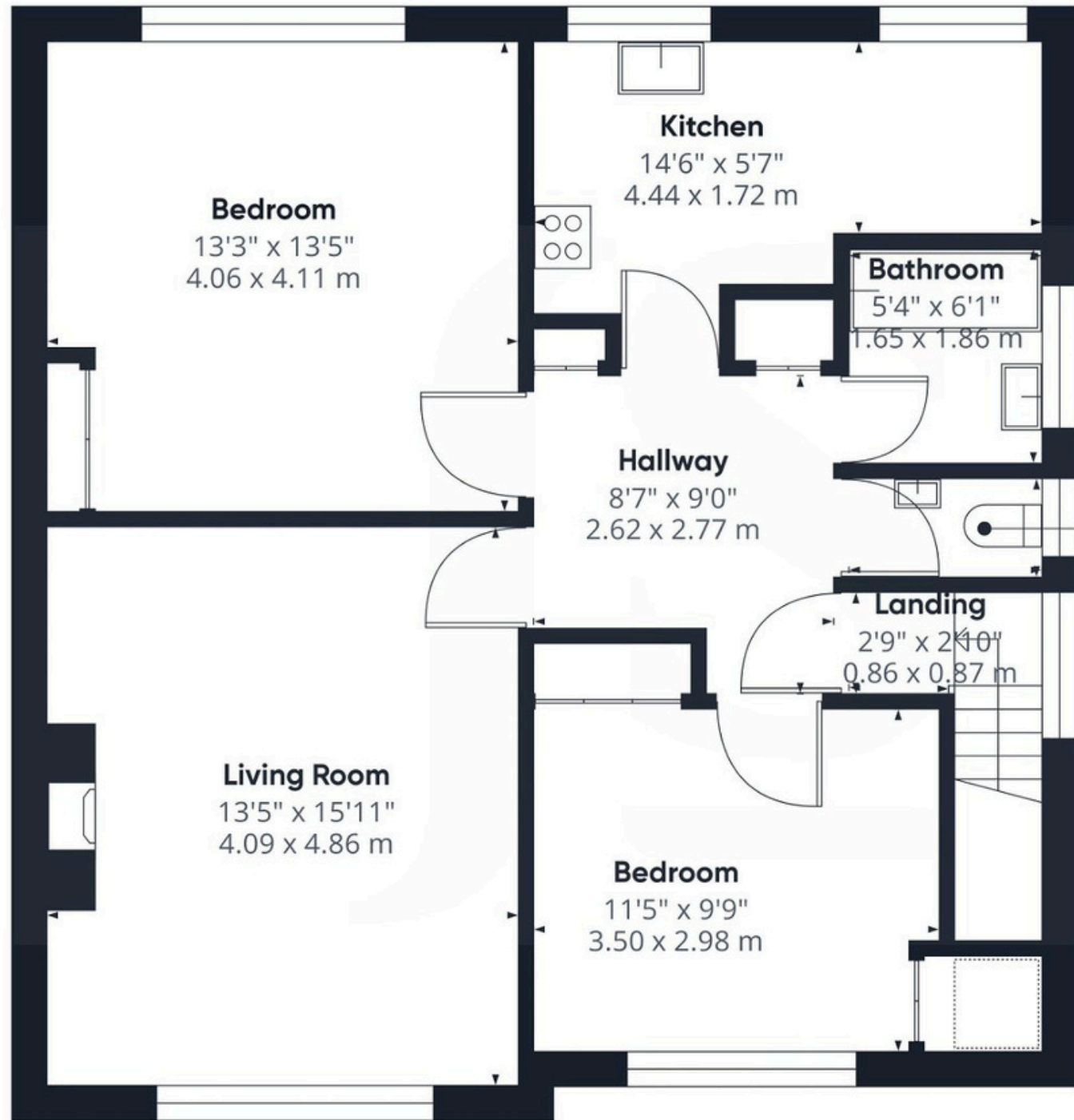
LOCATION

In the quiet cul de sac of St. Michaels court, the flat is one of few properties in this close in the popular West Worthing area. Worthing seafront is 0.4 miles away and local amenities can be found on close by Heene Road, with a convenience store, pharmacy and pub. Bus routes also run along Heene Road and the closest train station is West Worthing which is 0.7 miles away. Worthing town centre with it's comprehensive shops, restaurants and theatres is 0.8 miles away.

TENURE

Leasehold
Lease 101



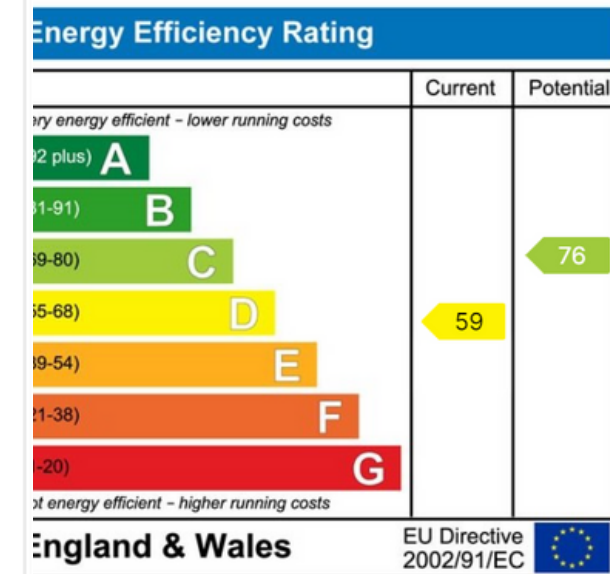


Approximate total area⁽¹⁾
768.42 ft²
71.39 m²

(1) Excluding balconies and terraces

While every attempt has been made to ensure accuracy, all measurements are approximate, not to scale. This floor plan is for illustrative purposes only.

GIRAFFE360



Property Details:

Floor area (as quoted by EPC): 79 sqm

Tenure: Leashold

Council tax band: C

Whilst we endeavour to make our property particulars accurate and reliable, we have not carried out a detailed survey. If there is any point which is of particular importance to you, please contact the office and we will be pleased to check the information for you, particularly if you are contemplating travelling some distance. Whilst every effort has been made to ensure that any floorplans are correct and drawn as accurately as possible, they are to be used for layout and identification purposes only and are not drawn to scale. The services, where applicable, including electrical equipment and other appliances have not been tested and no warranty can be given that they are in working order, even where described in these particulars. Carpets, curtains, furnishings, gas fires, electrical goods/fittings or other fixtures, unless expressly mentioned, are not necessarily included with the property.