



51a Mendip Crescent | Salvington | Worthing | BN13 2LR  
Asking Price **£325,000**





This brand new three bedroom home is perfect for those seeking a fresh start in a beautifully designed, move-in-ready property. Being sold with no ongoing chain.





## Key Features

- Brand New End of Terrace House
- Three Bedrooms
- Open Plan Kitchen/Diner
- Spacious Lounge
- Modern Bathroom
- South Facing Garden
- Ground Floor W.C
- Solar Panels & Air Source Heat Pump
- Under Floor Heating
- Chain Free



**3 Bedrooms**



**1 Bathroom**



**1 Reception Room**

### INTERNAL

This stunning brand new build home offers modern living with a thoughtfully designed layout. The spacious lounge is a welcoming space, featuring double doors that open into a stylish new kitchen. The kitchen is fitted with high-quality units, including two ovens, and showcases a feature island, perfect for culinary creativity. There's ample room for a dining table, making it an ideal space for entertaining. Double glazed doors lead out to the rear garden, seamlessly connecting indoor and outdoor living. Upstairs, the home boasts three well-proportioned bedrooms. The contemporary bathroom is complete with a bath, shower over, and beautifully fitted modern tiles, providing both comfort and style.

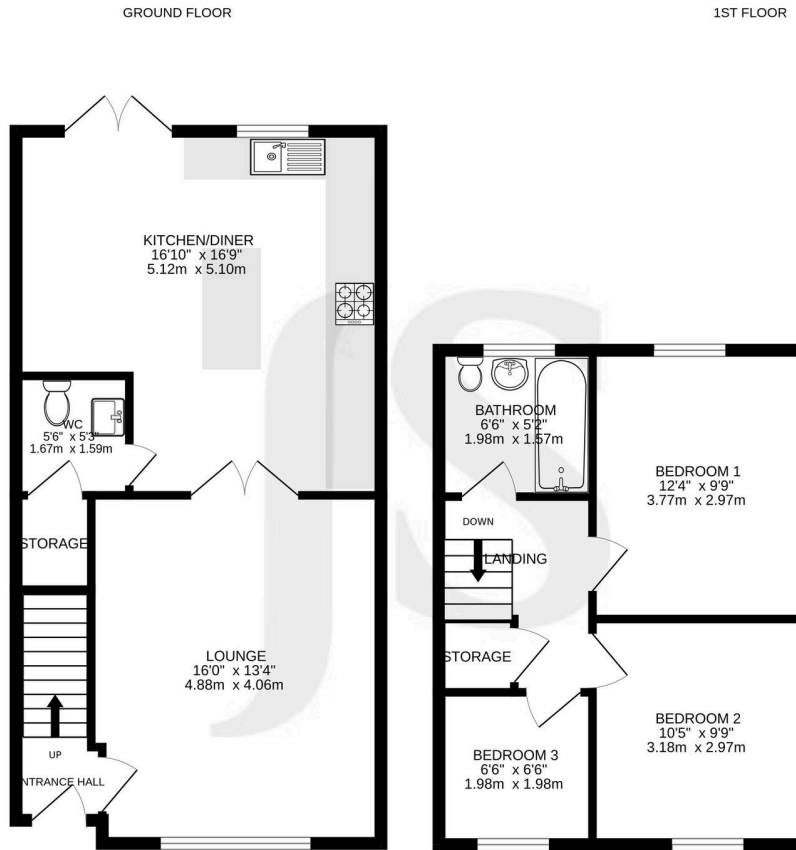
### EXTERNAL

Stepping out from the double glazed doors, you're greeted by a charming patio area, perfect for outdoor dining or relaxation. A step down from the patio leads to a freshly laid lawn, providing a lush green space ideal for play or gardening. The garden is fully enclosed by secure fencing, offering both privacy and a safe, tranquil retreat to enjoy.

### LOCATION

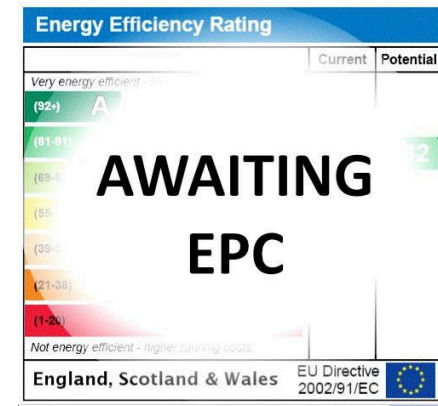
In this popular residential location on the outskirts of Worthing within close distance of local shopping facilities and parks. Lovely walks up to High Salvington and The Gallops. Bus routes are nearby providing access to surrounding districts and Worthing Town Centre with its comprehensive shopping amenities, restaurants, pubs, cinemas, theatres, seafront and leisure facilities is approximately three miles away. The nearest station is Durrington on Sea which is approximately one and a half miles away. Easy access to A24/A23/A27.





Whilst every attempt has been made to ensure the accuracy of the floorplan contained here, measurements of doors, windows, rooms and any other items are approximate and no responsibility is taken for any error, omission or mis-statement. This plan is for illustrative purposes only and should be used as such by any prospective purchaser. The services, systems and appliances shown have not been tested and no guarantee as to their operability or efficiency can be given.  
Made with Metropix ©2024

Whilst we endeavour to make our property particulars accurate and reliable, we have not carried out a detailed survey. If there is any point which is of particular importance to you, please contact the office and we will be pleased to check the information for you, particularly if you are contemplating travelling some distance. Whilst every effort has been made to ensure that any floorplans are correct and drawn as accurately as possible, they are to be used for layout and identification purposes only and are not drawn to scale. The services, where applicable, including electrical equipment and other appliances have not been tested and no warranty can be given that they are in working order, even where described in these particulars. Carpets, curtains, furnishings, gas fires, electrical goods/ fittings or other fixtures, unless expressly mentioned, are not necessarily included with the property.



## Property Details:

Floor area (as quoted by EPC):

Tenure: Freehold

Council tax band: C