



Goldstone Villas | Hove | BN3 3RS
Offers Over **£300,000**



Occupying the entire lower ground floor of this period conversion property in central Hove, sits this large two bedroom apartment with private west-facing garden.



Key features:

- Two Bedrooms
- Private Garden
- Spacious Master Bedroom
- Good Storage
- West Facing Garden
- Central Hove Location
- Close To Station

 2 Bedrooms

 1 Bathroom

 1 Living Room

INTERNAL Entering the property via its own private entrance you are met with a entrance hall. Off the hallway to your left, you will find a large master bedroom, the master is a good size double with parquet flooring. To the right of the hallway, you find the smaller second bedroom currently being used as home office.

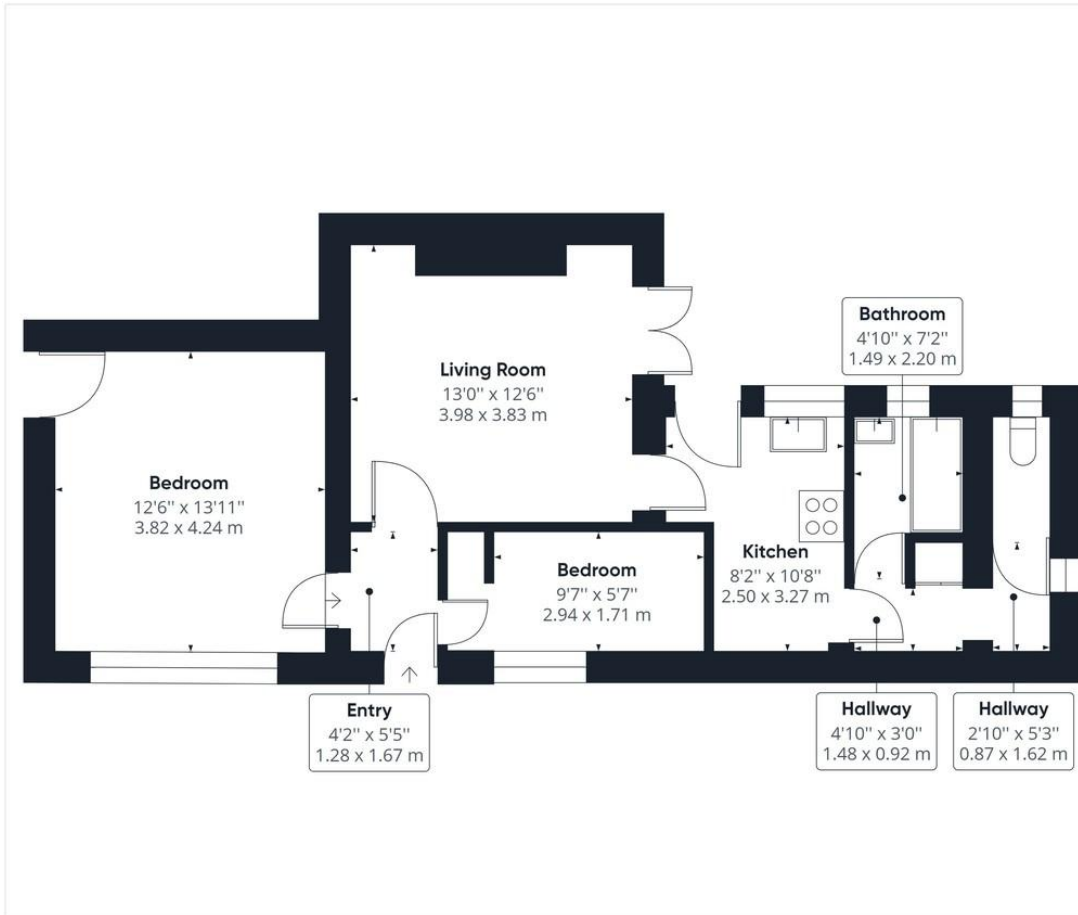
The bathroom has been finished in a modern white metro tile with white suite, a bath and shower over, mirrored vanity unit. Next to the bathroom is a separate WC.

The large and impressive west facing living/dining room enjoys plenty of light. French doors lead out on the private garden. Just off the living room is the modern fitted kitchen with white units and a modern grey worktop, there is a space for a fridge, freezer, an integrated oven, and gas hob.

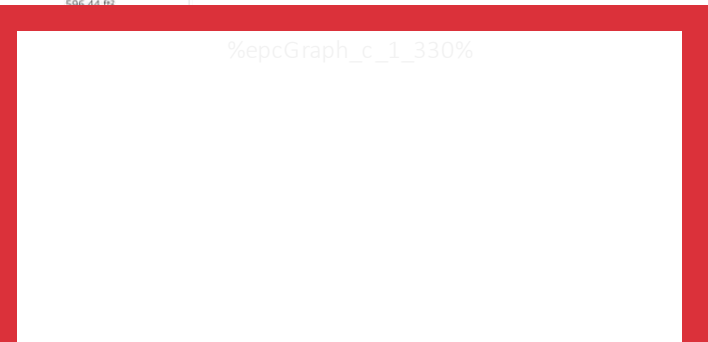
LOCATION Goldstone Villas is situated in a popular area of Hove, with numerous local shops and restaurants, as well as the beach on your doorstep. The city centre shopping districts and parks are also within easy reach, and this home also offers easy access to Hove Train Station with direct and fast links to Gatwick airport and London.

EXTERNAL This property also benefits from an attractive west facing private garden with space for a table and chairs and bbq.





Approximate total area^(ft)
536.44 ft²



Property Details:

Tenure: Leasehold

Council Tax: Band B

Whilst we endeavour to make our property particulars accurate and reliable, we have not carried out a detailed survey. If there is any point which is of particular importance to you, please contact the office and we will be pleased to check the information for you, particularly if you are contemplating travelling some distance. Whilst every effort has been made to ensure that any floorplans are correct and drawn as accurately as possible, they are to be used for layout and identification purposes only and are not drawn to scale. The services, where applicable, including electrical equipment and other appliances have not been tested and no warranty can be given that they are in working order, even where described in these particulars. Carpets, curtains, furnishings, gas fires, electrical goods/ fittings or other fixtures, unless expressly mentioned, are not necessarily included with the property.