



Sackville Road | Hove | BN3 3FA

**£225,000**

**JS**  
living property  
jacobs | steel





With high ceilings, original features, and a perfect Hove location; Studio flat, newly refurbished throughout. Great first time buy or investment.



## Key features:

- 32 Square Meters
- High Ceilings
- Original Features Throughout
- Refitted Bathroom
- Refitted Kitchen
- Long Lease
- Low Outgoings
- Hove Location

 1 Bedrooms

 1 Bathroom

 1 Living Room

**INTERNAL** The bathroom is first door on the right and is contemporary with large scale wall tiles in marble effect and includes cabinetry for toiletries and a fresh bath.

Stepping into the living room / bedroom, you are immediately greeted by the glorious light taking your line of sight across the local area. This view is ever-changing with the seasons, forming a lovely backdrop to the room, and the sunrises are exceptional. It is a large open plan space with a separate kitchen, so it does not impose. There is ample space elsewhere for formal dining and comfortable sofas and chairs. The well-designed kitchen with plenty of storage in white units, space for a dishwasher / fridge / freezer and the fan oven and hob are integrated.

**LOCATION** Shops: Local 1 min walk, Church Road 5 min walk

Train Station: Hove Station 3-5 min walk

Seafront or Park: St Ann's Well Gardens 4-6 min walk, Seafront 7-9 min walk

Closest Schools:

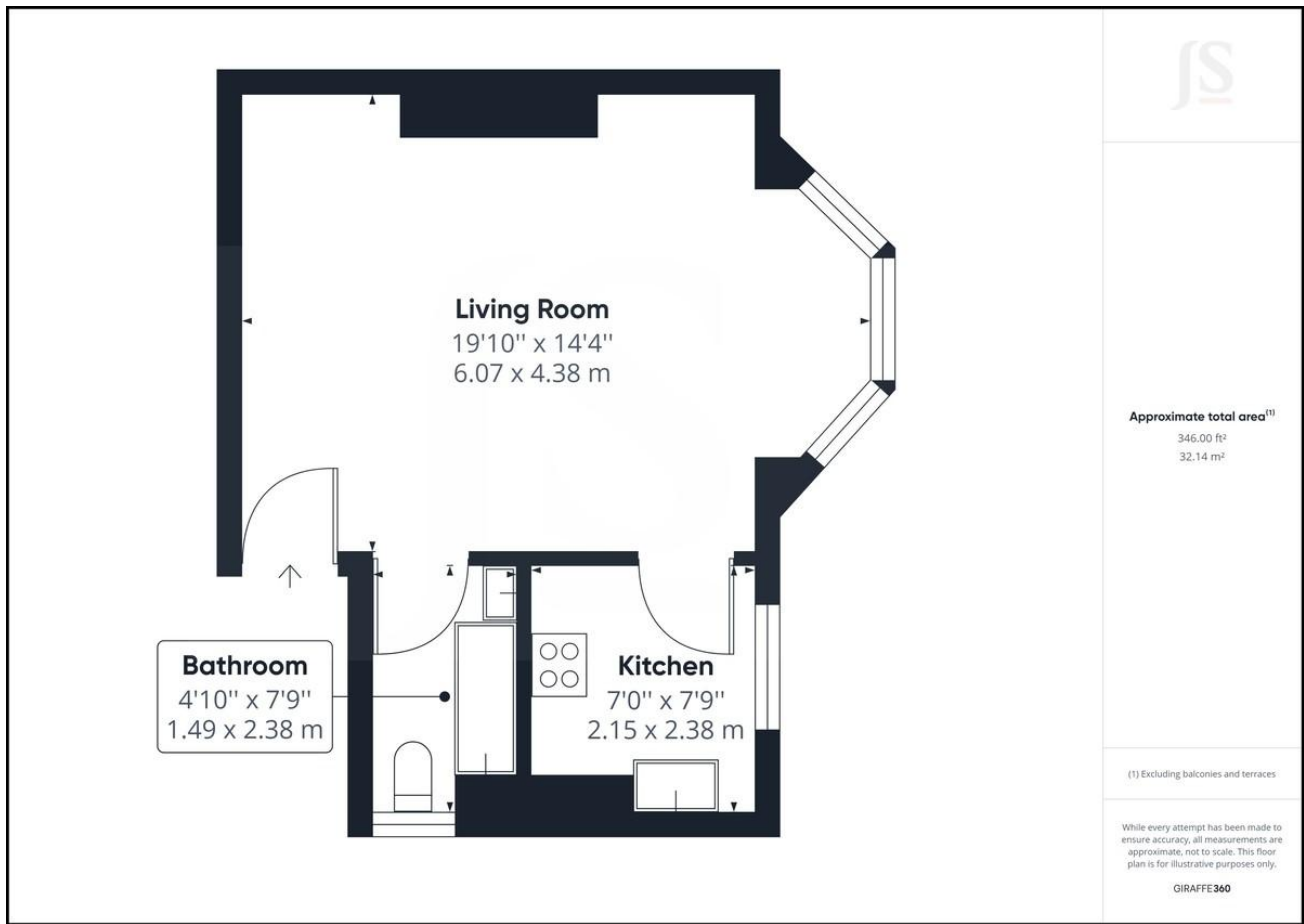
Primary: Brunswick Primary, Hove Primary School

Secondary: Hove Park, Blatchington Mill, Cardinal Newman RC

Private: Brighton College

This attractive flat is perfectly situated in a popular area with lots of local shops and the beach nearby. The city centre shopping districts and parks are also within easy reach, and this apartment also offers easy access to Hove Station which has direct and fast links to the airports and London.





%epcGraph\_c\_1\_330%

## Property Details:

Tenure: Leasehold

Whilst we endeavour to make our property particulars accurate and reliable, we have not carried out a detailed survey. If there is any point which is of particular importance to you, please contact the office and we will be pleased to check the information for you, particularly if you are contemplating travelling some distance. Whilst every effort has been made to ensure that any floorplans are correct and drawn as accurately as possible, they are to be used for layout and identification purposes only and are not drawn to scale. The services, where applicable, including electrical equipment and other appliances have not been tested and no warranty can be given that they are in working order, even where described in these particulars. Carpets, curtains, furnishings, gas fires, electrical goods/ fittings or other fixtures, unless expressly mentioned, are not necessarily included with the property.