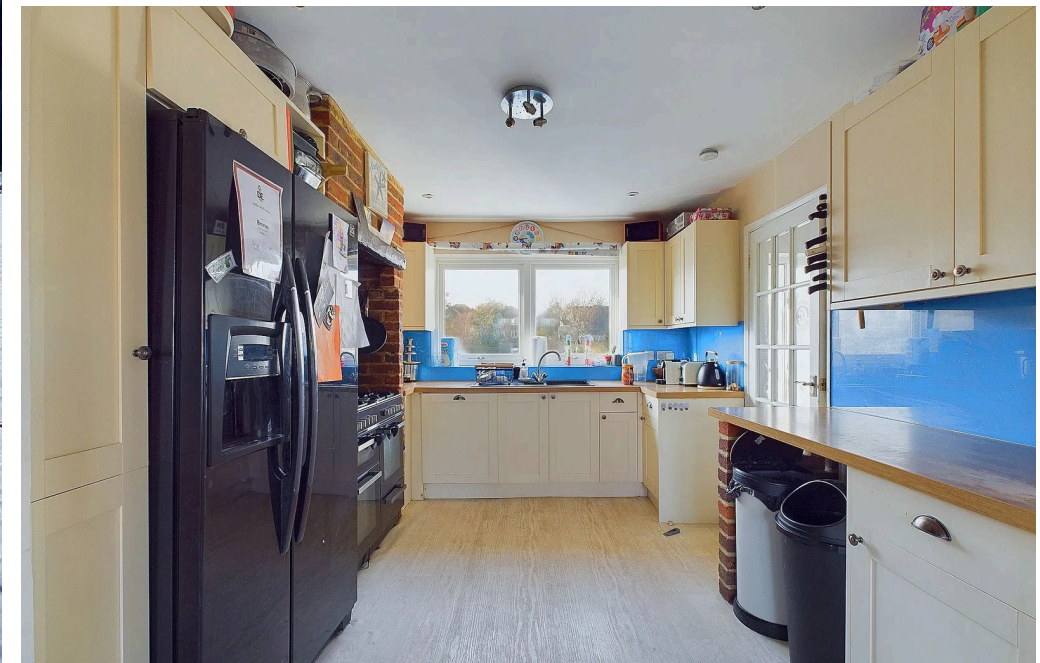




Old Salts farm Road | Lancing | BN15 8JD  
Asking Price Of **£525,000**





A versatile and spacious detached family home in close proximity of the beach, offering generous accommodation with four double bedrooms, 24ft living room, kitchen dining room, bathroom and shower room. Set back from the road with a plenty of off road parking and private rear garden.



Property details: Inglenook, Old Salts farm Road



## Key Features

- Detached Family Home
- Four Double Bedrooms
- 24ft Living Room
- Kitchen Dining Room
- Ground Floor Bathroom
- First Floor Shower Room
- Off Road Parking & Garage
- Southerly Aspect Balcony
- Close to Beach
- Chain Free



**4 Bedrooms**



**2 Bathrooms**



**2 Reception Rooms**

### INTERNAL

Entry from the porch opens into the entrance hall with doors leading to the ground floor accommodation. The generous 24ft living room is a feature of the home with Inglenook fireplace and spiral staircase to the first floor, also provides access via double doors to the kitchen dining room and double glazed sliding doors to the rear garden. The kitchen is fitted with matching wall and base units and fitted worksurfaces, space for range style cooker, American style fridge freezer and dishwasher. The kitchen opens to the dining area that provides ample space for table and chairs. From the dining room is the utility room with space and plumbing for washing machine and tumble drier and doors to the rear garden and garage. There is a double bedroom on the ground floor and a family bathroom with corner bath with shower over, hand wash basin and W.C. On the first floor there are three double bedrooms, with the primary bedroom benefiting from a southerly aspect balcony, from the landing is a shower room and a separate W.C.

### EXTERNAL

The property is approached by a shared driveway with double gates opening to the front garden that is laid to hardstanding providing ample off road parking and access to the garage with an up and over door and benefits from power and light. The rear garden is mainly laid to lawn with green house and access to a storage to the side of the property.

### SITUATED

Located in Old Salts Farm Road, within walking distance of Lancing Beach and with the popular Perch Café on Beach Green approximately 0.5 miles away. Lancing train station with direct access into London, Brighton, and local amenities on North Road and South Street accessible approximately 0.7 miles away.

