



7 Saxon Court, Albert Road, Littlehampton , BN17 7TN
Asking Price of £165,000



We are pleased to offer to the market a stylish one bedroom, second floor apartment. The property is located in the heart of Littlehampton. Located just a short walk away from Littlehampton Railway Station. The property benefits from an open plan modern kitchen/ living space, modern bathroom, balcony and a long lease.



Key Features

- Second Floor Apartment
- One Bedroom
- Open Plan Kitchen/ Living Space
- Modern Bathroom
- Long Lease
- Balcony
- Close To Local Shopping Facilities
- Close To Littlehampton Railway Station



1 Bedrooms



1 Bathroom



1 Reception Rooms

INTERNAL

Accessed via a well-maintained communal entrance with stairs leading to the second floor, the front door opens into a welcoming entrance hall providing access to all rooms. The apartment boasts a bright and airy open-plan kitchen/living area, enhanced by doors leading out to the balcony. The contemporary kitchen features sleek, modern units, a built-in oven, an integrated fridge/freezer, for practical, stylish living. The bedroom is generously proportioned, offering ample space for wardrobes and furnishings to suit your needs. Completing the accommodation is a modern bathroom with bath, wash hand basin with built-in storage and a WC—finished to a high standard throughout.

LOCATION

in a popular residential location close to amenities in Littlehampton Town Centre. Within 200 metres of the property you will find Littlehampton Mainline Railway Station which provides transport link to London Victoria, Brighton, Portsmouth and more locally Arundel and Chichester.

TENURE

Lease: Remainder of a 999 year lease

Service Charge: £1312 per annum

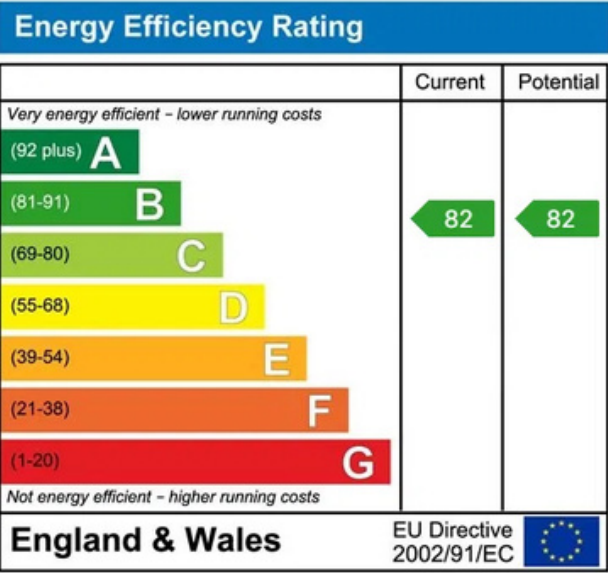
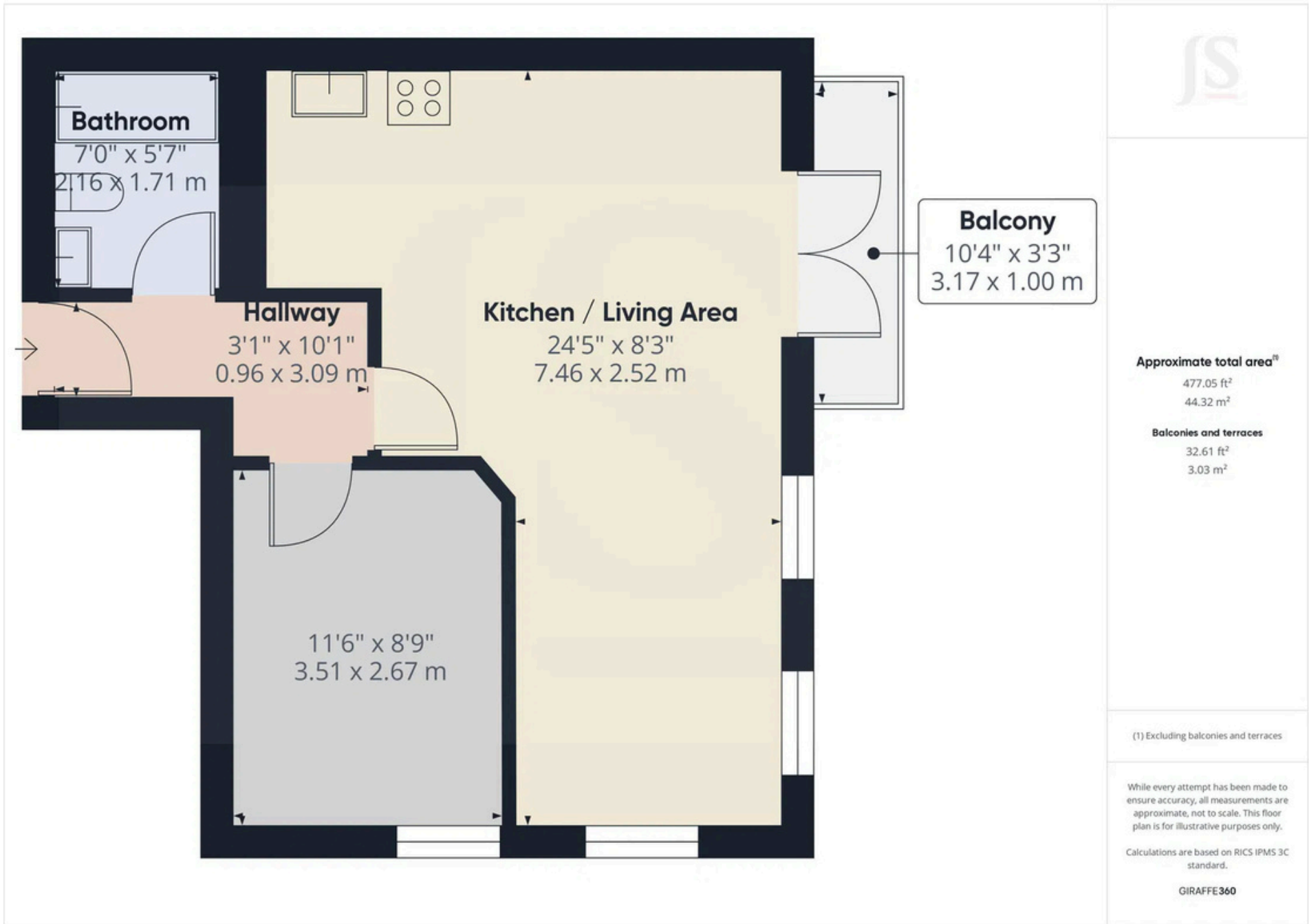
Ground Rent: N/A

EXTERNAL

The property benefits from a balcony.



To book a viewing contact us on: 01903 506080 | westworth@jacobs-steel.co.uk | jacobs-steel.co.uk



Property Details:

Floor area (as quoted by EPC: 46 sqm

Tenure:Leasehold

Council tax band: A

Whilst we endeavour to make our property particulars accurate and reliable, we have not carried out a detailed survey. If there is any point which is of particular importance to you, please contact the office and we will be pleased to check the information for you, particularly if you are contemplating travelling some distance. Whilst every effort has been made to ensure that any floorplans are correct and drawn as accurately as possible, they are to be used for layout and identification purposes only and are not drawn to scale. The services, where applicable, including electrical equipment and other appliances have not been tested and no warranty can be given that they are in working order, even where described in these particulars. Carpets, curtains, furnishings, gas fires, electrical goods/fittings or other fixtures, unless expressly mentioned, are not necessarily included with the property.