



Old Cottages | Horsham Road Findon Village | BN14 0TQ  
Asking Price **£445,000**





Immaculate home in sought after Findon Village with three double bedrooms, refitted kitchen, home office/garden room and larger than average garden. Viewing is a must!





## Key Features

- Semi Detached House
- Three Bedrooms iving Room
- Refitted Kitchen
- Immaculate Throughout
- Spacious Bathroom
- Ground Floor W.C
- Conservatory
- Large Rear Garden
- Garden Room/Office



**3 Bedrooms**



**1 Bathroom**



**2 Reception Rooms**

### INTERNAL

Upon entering the property, you are welcomed into a beautifully presented home, boasting spotless interiors and modern décor throughout. The living room offers a charming and cosy space, featuring a striking exposed brick fireplace the perfect focal point for relaxing evenings. A characterful wooden door leads into the stylish, refitted kitchen, complete with contemporary units and exposed brickwork, maintaining the rustic charm that flows seamlessly throughout the house. From the lounge, double doors open into a bright and versatile conservatory, ideal as an additional living area or dining space. Completing the ground floor is a convenient W.C., thoughtfully positioned for added practicality. Upstairs, the first floor hosts two double bedrooms and a spacious, well-appointed bathroom. The top floor reveals a recently converted loft, now a bright airy third bedroom with the added benefit of a walk-in storage cupboard.

### EXTERNAL

Outside, the property sits on a substantial plot with a larger-than-average garden, mainly laid to lawn. A raised wood-decked area provides the perfect spot for outdoor dining or sunbathing in warmer months. The garden also features a versatile garden room, ideal for use as a home office, gym, or studio. A side gate offers easy access to the front of the property, adding to the overall convenience and flow of the outdoor space.

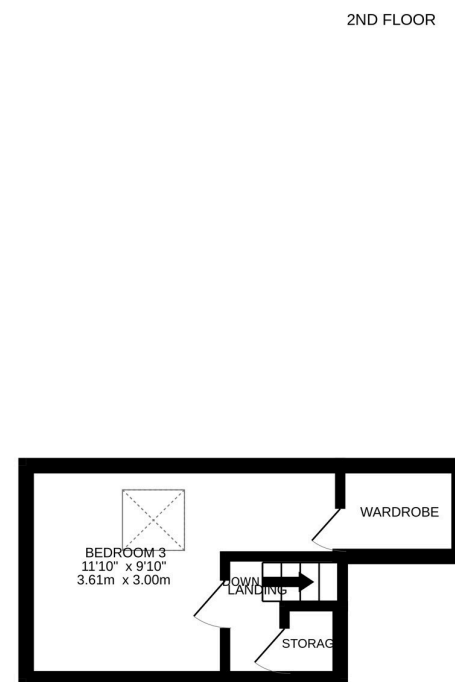
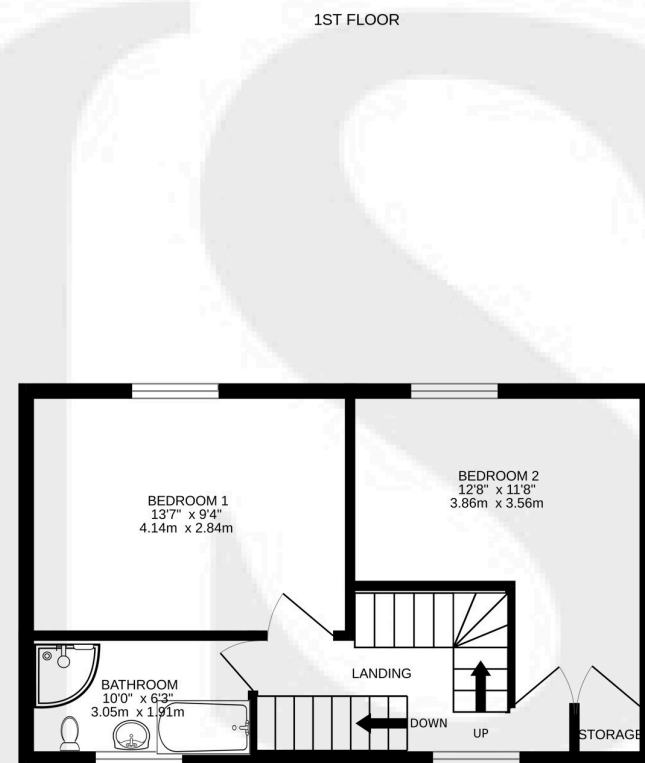
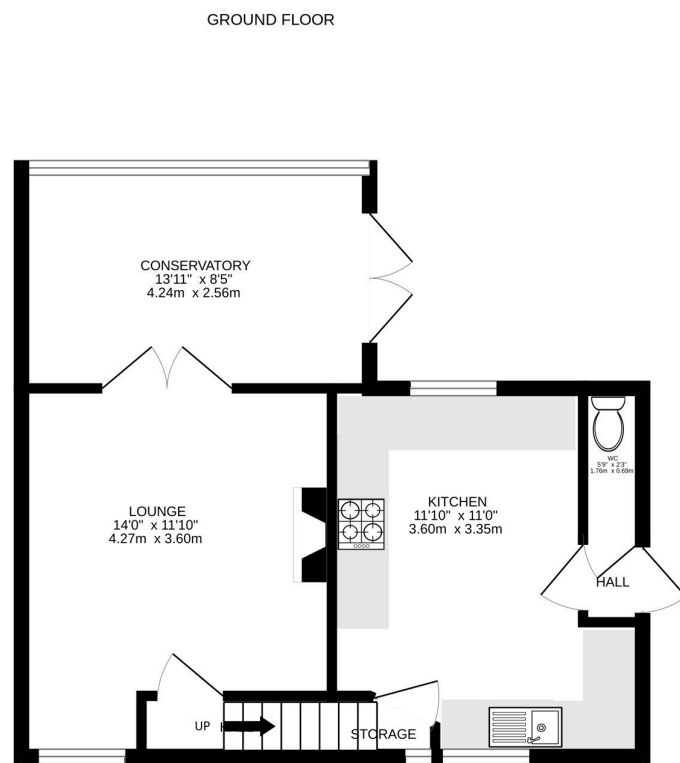
### SITUATED

Situated in the heart of Findon Village which is nestled at the foot of the South Downs National Park and close to Cissbury Ring with lovely woodland walks. Findon Village has a selection of shops, pubs, restaurants and hotels, together with post office/newsagents. The Village also has an infant/junior school. A regular bus services passes through providing access to Worthing town centre, seafront and surrounding districts. Close access to A24 and A27.



To book a viewing contact us on: 01903 873999 | [findon@jacobs-steel.co.uk](mailto:findon@jacobs-steel.co.uk) | [jacobs-steel.co.uk](http://jacobs-steel.co.uk)





Whilst every attempt has been made to ensure the accuracy of the floorplan contained here, measurements of doors, windows, rooms and any other items are approximate and no responsibility is taken for any error, omission or mis-statement. This plan is for illustrative purposes only and should be used as such by any prospective purchaser. The services, systems and appliances shown have not been tested and no guarantee as to their operability or efficiency can be given.  
Made with Metropix ©2025

## Property Details:

Floor area as quoted by EPC: TBC SqFt

Tenure: Freehold

Council tax band: C

Whilst we endeavour to make our property particulars accurate and reliable, we have not carried out a detailed survey. If there is any point which is of particular importance to you, please contact the office and we will be pleased to check the information for you, particularly if you are contemplating travelling some distance. Whilst every effort has been made to ensure that any floorplans are correct and drawn as accurately as possible, they are to be used for layout and identification purposes only and are not drawn to scale. The services, where applicable, including electrical equipment and other appliances have not been tested and no warranty can be given that they are in working order, even where described in these particulars. Carpets, curtains, furnishings, gas fires, electrical goods/fittings or other fixtures, unless expressly mentioned, are not necessarily included with the property.